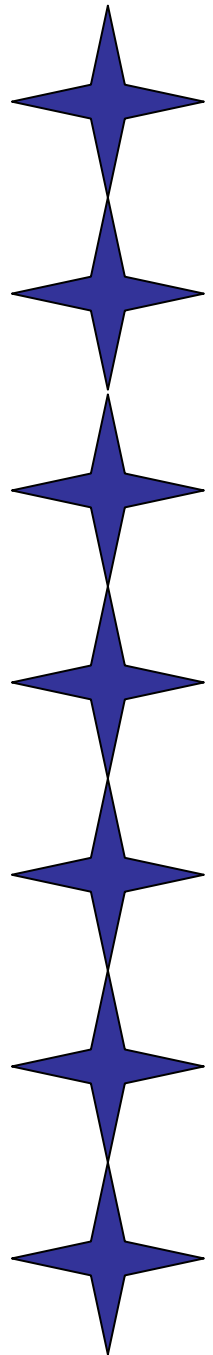


CHSS Documentation

Erasing a CD/RW

John Osmak

Version 1.0
Summer 2006



Erasing a CD/RW

Navigate to the Sonic RecordNow! Software by *clicking* on Start -> Programs -> Sonic -> RecordNow! and *click* the **RecordNow!** icon. When the Sonic software opens *click* on the tab with the **house** on it, then *click* **Erase Disc** which is located under the Utilities portion of the window. (Fig. 1)



Fig. 1

The figure 2 window will appear after clicking Erase Disc.

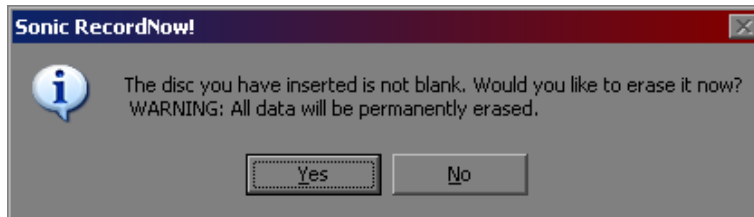


Fig. 2

Click yes to begin erasing the CD/RW.

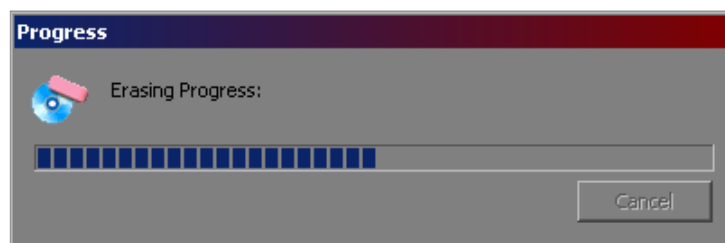


Fig. 3

Upon completion the disc should eject from the drive.