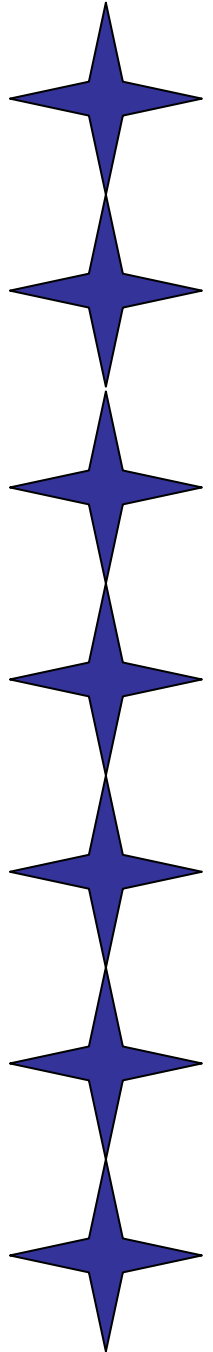


# CHSS Documentation

## Using Ghost Cast to Image PCs

**John Osmak**

Version 1.0  
Summer 2006



**Table of Contents**

**Section 1: Image Restore .....3**

**Section 2: Image Creation .....6**

**Section 3: Connecting the Client Computer to a Session .....9**

The purpose of this document is to explain how to use Ghostcasting to restore and create system images.

### Section 1: Image Restore (From the GhostCast Server computer)

Click **Start > Programs > Symantec Ghost > GhostCast Server**. The GhostCast Server window will open (Figure 1.1). In this case, we will be restoring an image onto a client computer. First, a session name must be chosen, in this example its RESTORE, but it may be named anything.

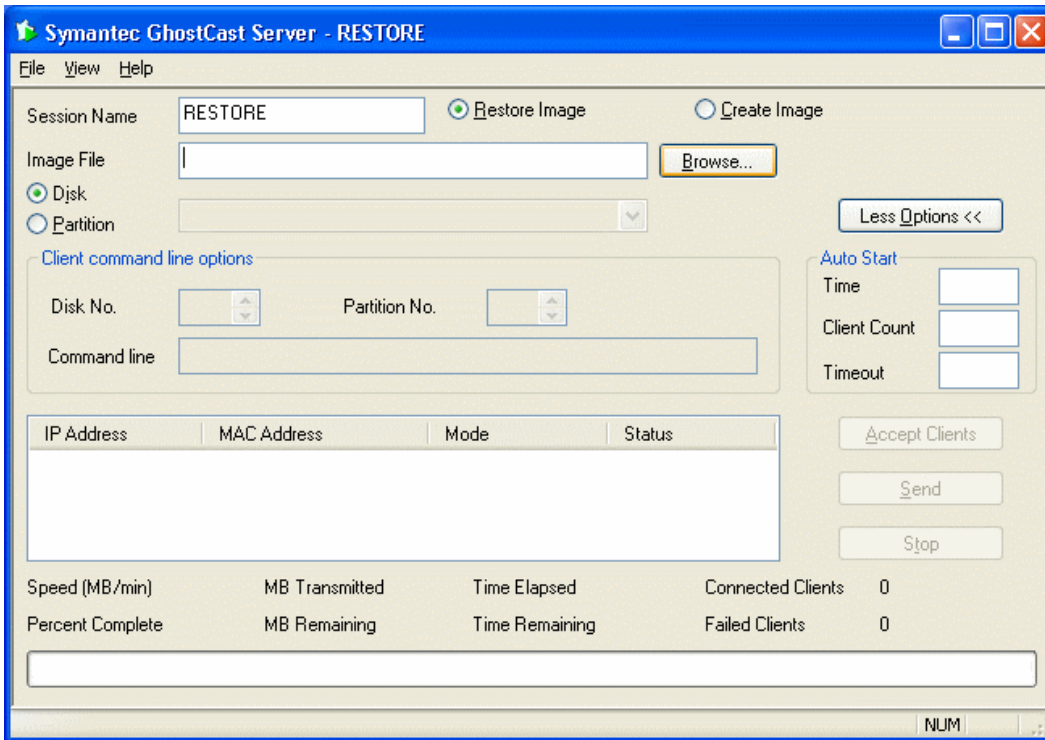
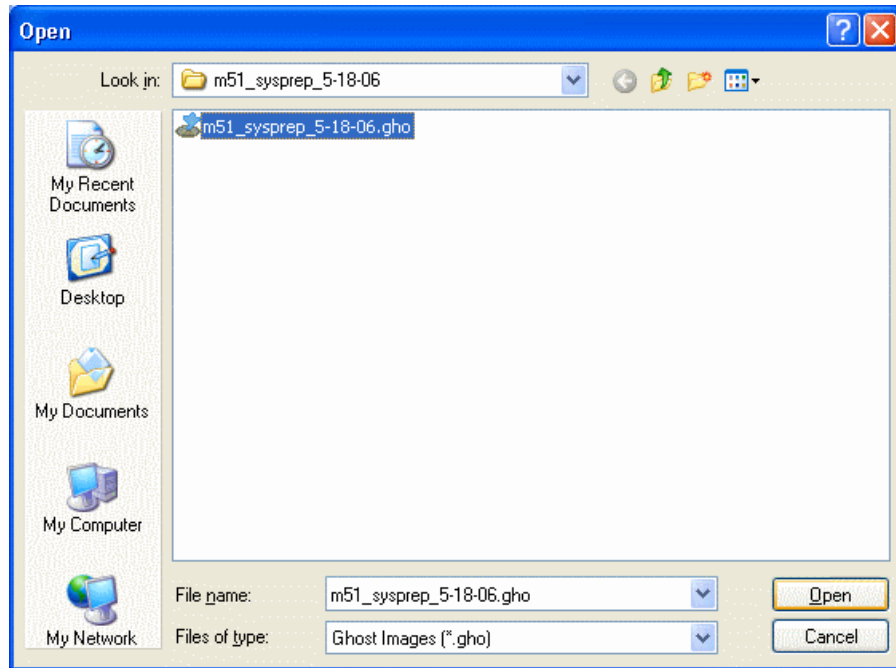


Figure 1.1

Second, the image file must be chosen. This is done by *clicking* **Browse** (Figure 1.1) and navigating to where the image file is stored (Figure 1.2) and *selecting* **Open**.



**Figure 1.2**

This will bring you to Figure 1.3 where you will *Click* **Accept Clients**. The session is now ready for clients to connect. The process of connecting clients is explained in Section 3.

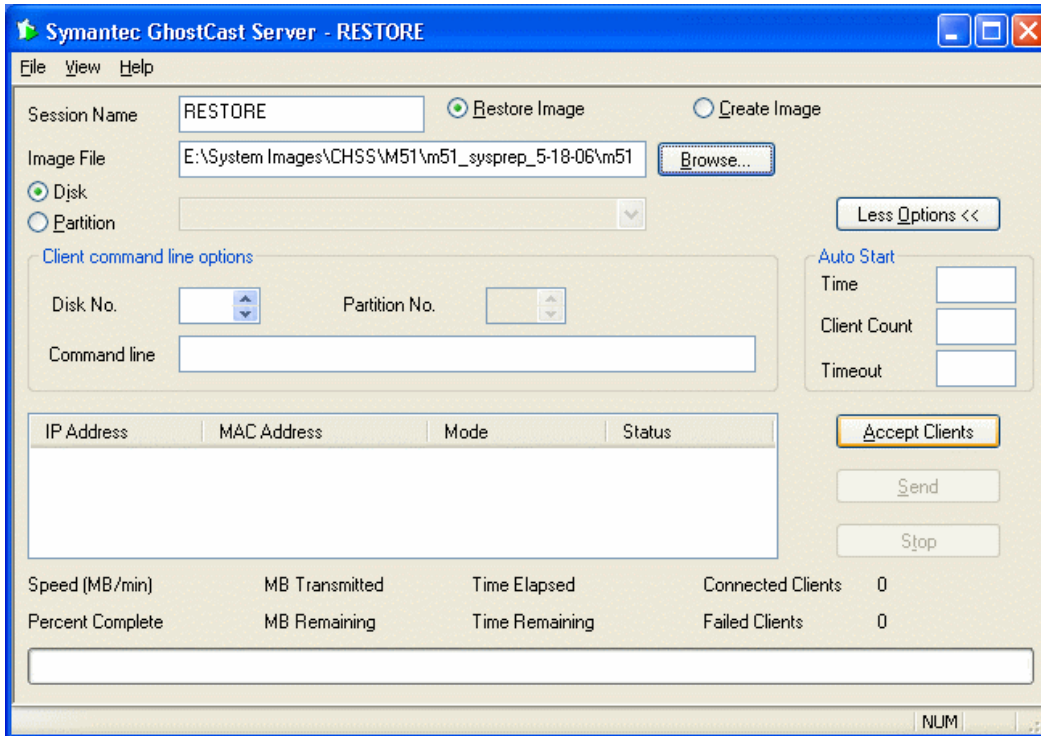


Figure 1.3

Once you connect the client or clients, *Click Send* (Figure 1.4).

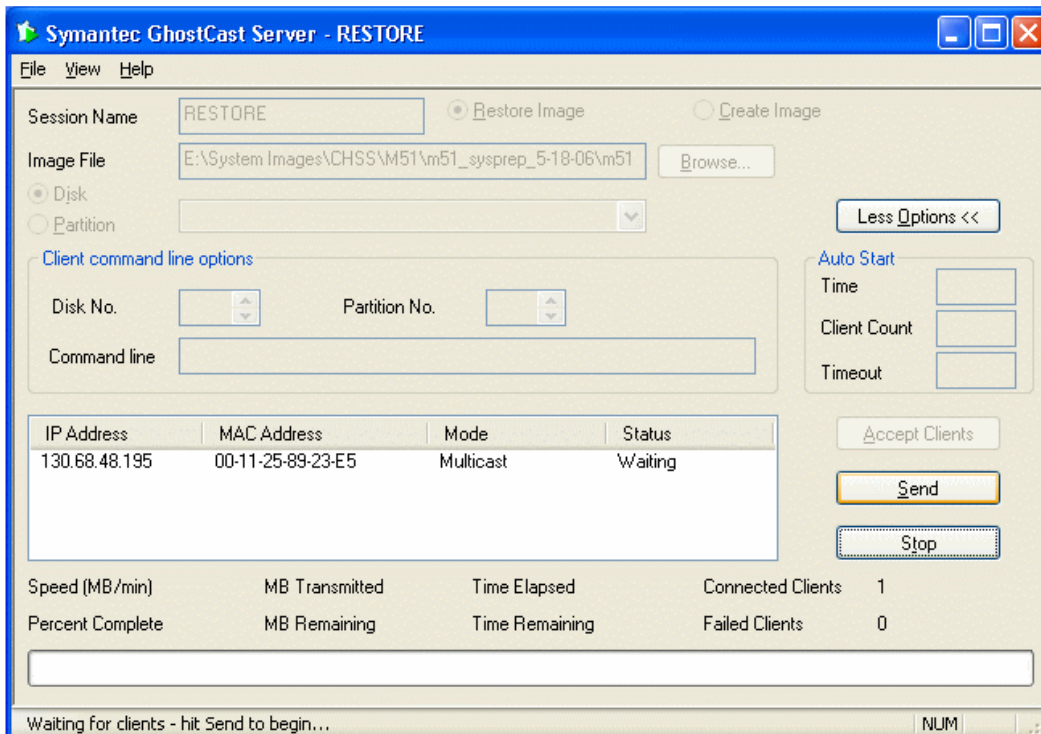


Figure 1.4

## Section 2: Image Creation (From the GhostCast Server computer)

Click **Start > Programs > Symantec Ghost > GhostCast Server**. The GhostCast Server window will open (Figure 2.1). In this case, we will be creating an image of a client computer. First, a session name must be chosen, this in this example its CREATE but it may be named anything.

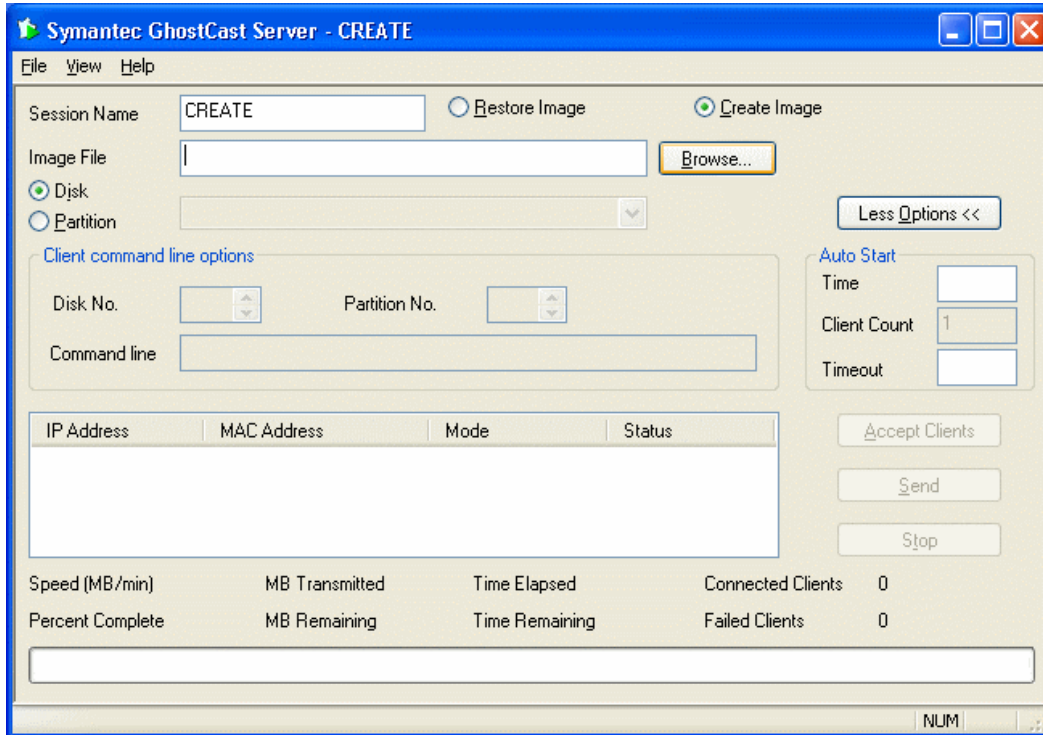


Figure 2.1

Second, you must choose a destination and name for the image file then **Click Save** (Figure 2.2). Images are generally stored on the Ghost Server but may be stored in another location.

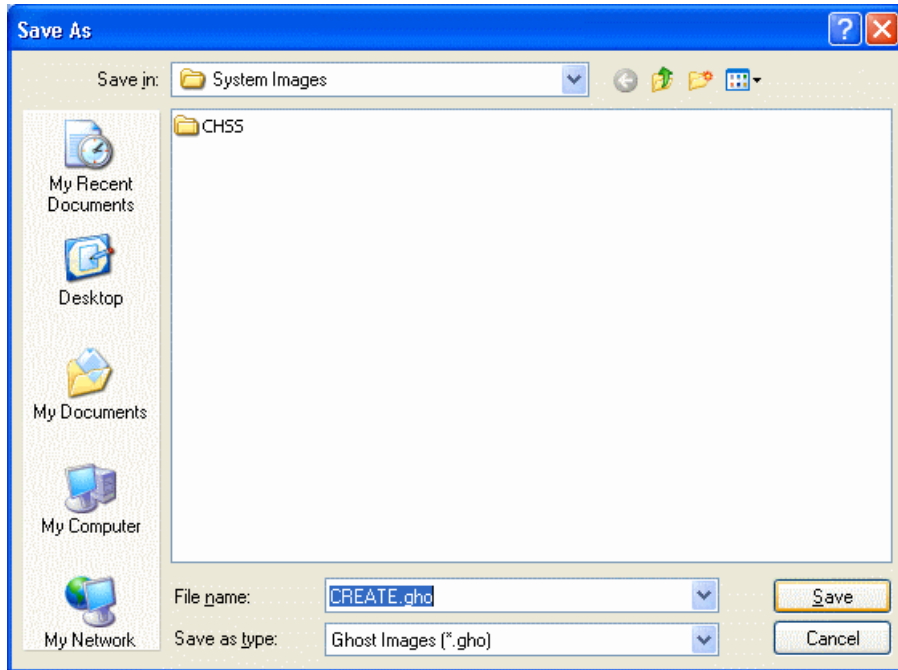


Figure 2.2

This will bring you to Figure 2.3 where you will *Click Accept Clients*. The session is now ready for clients to connect. The process of connecting clients is explained in Section 3.

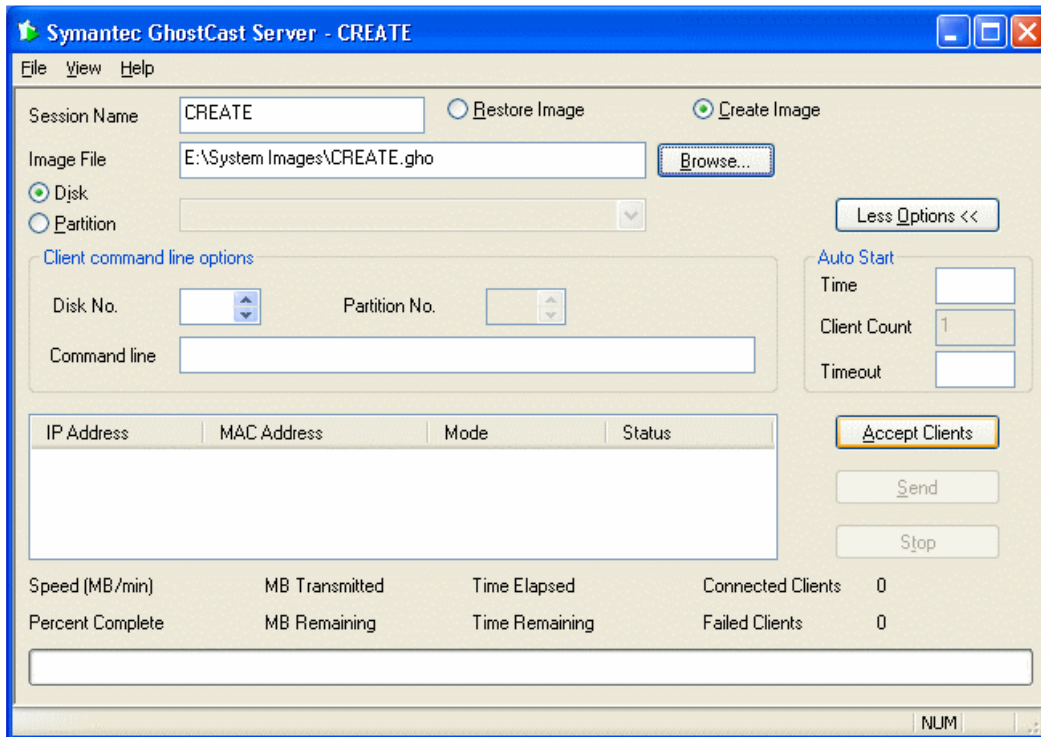


Figure 2.3

Once the client is connected the session should start automatically. (Figure 2.4)

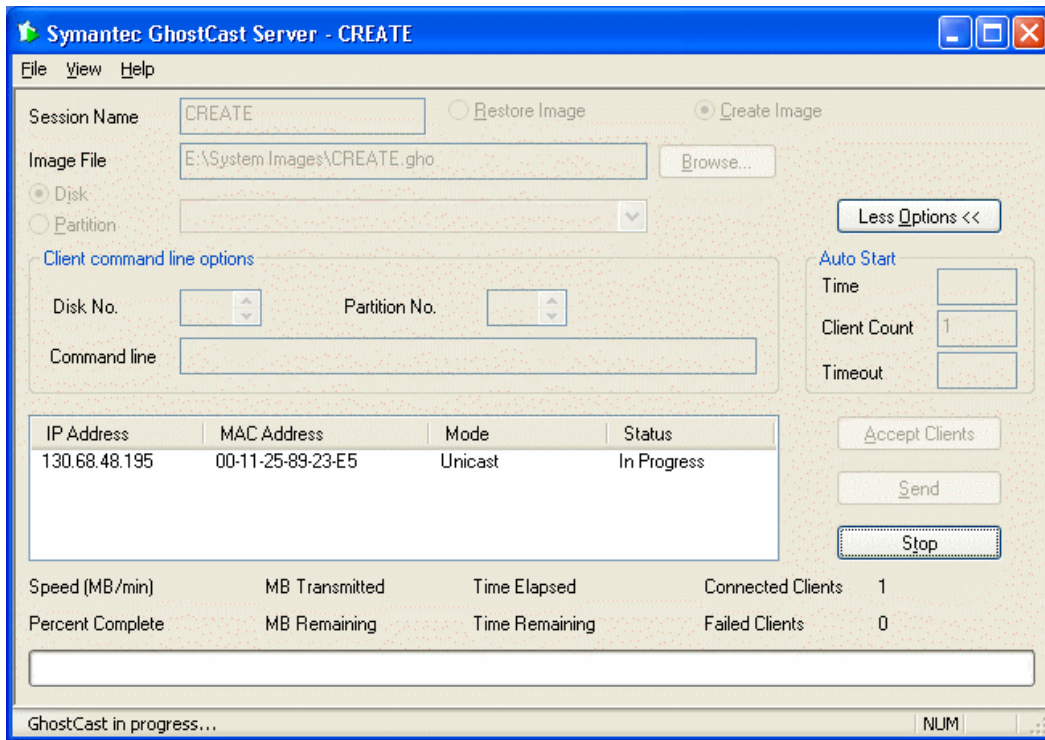


Figure 2.4

### Section 3: Connecting the Client Computer to a Session

This process is the same for Image Restoration and Creation. Turn the system on and *tap F12*, this will bring up the Startup/Boot Menu (Figure 3.1). *Insert Multi Boot CD*; *Choose CD ROM Drive* from the Startup/Boot Menu (Figure 3.2).

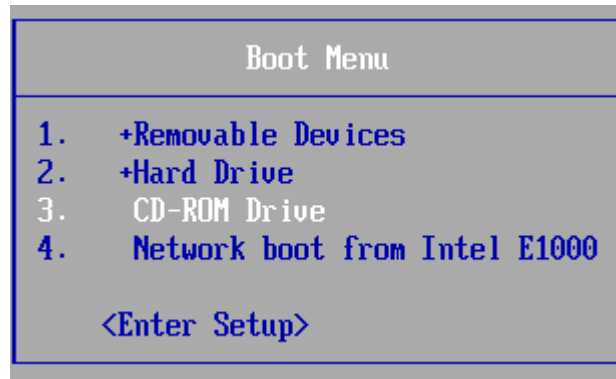


Figure 3.1

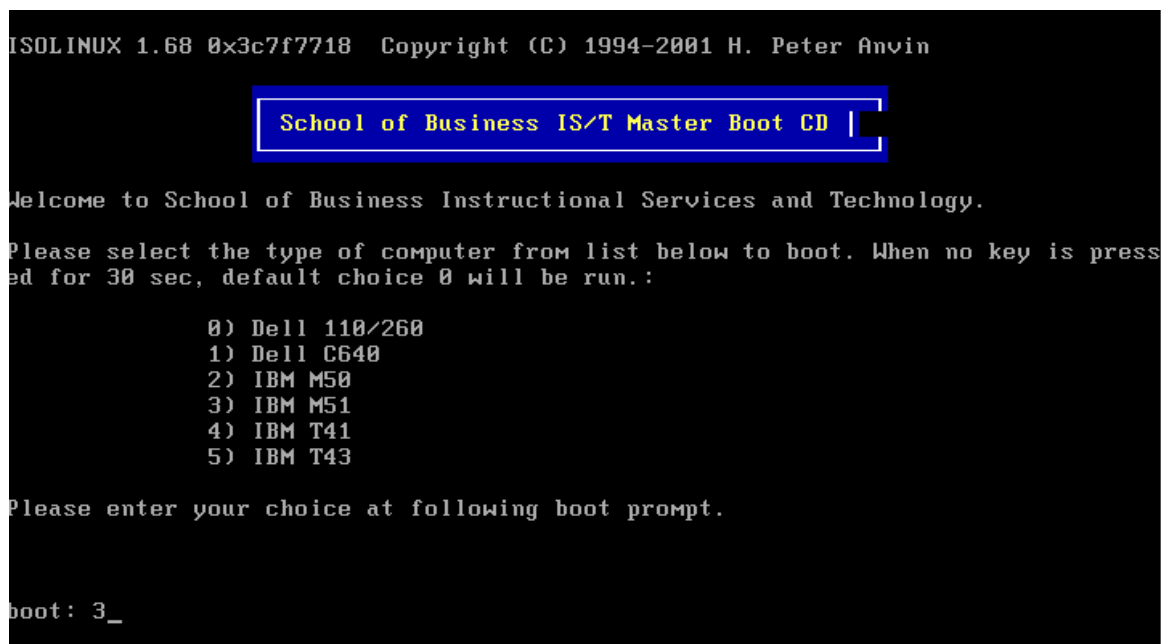


Figure 3.2

This brings you to a menu where you have the option of choosing a boot image (Figure 3.3). Here you choose the boot image that corresponds with the system you are imaging. The PC DOS Startup Menu appears next, *Choose 2. This computer was started from a Ghost bootable CD.*

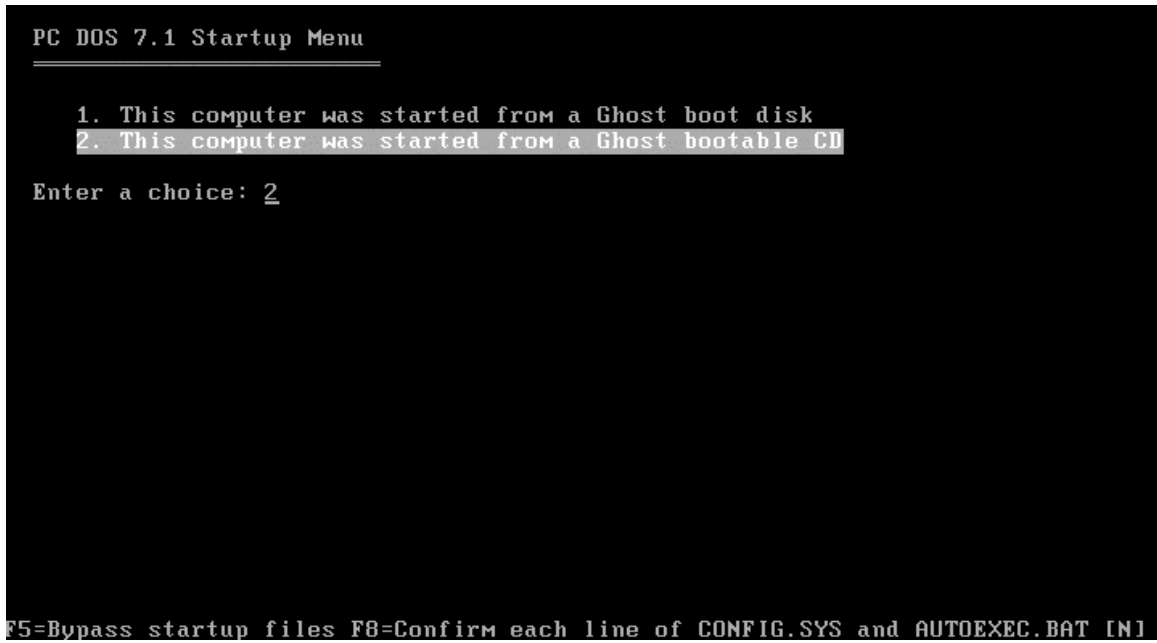


Figure 3.3

Next the Ghost GUI opens (Figure 3.4), *Click OK.*

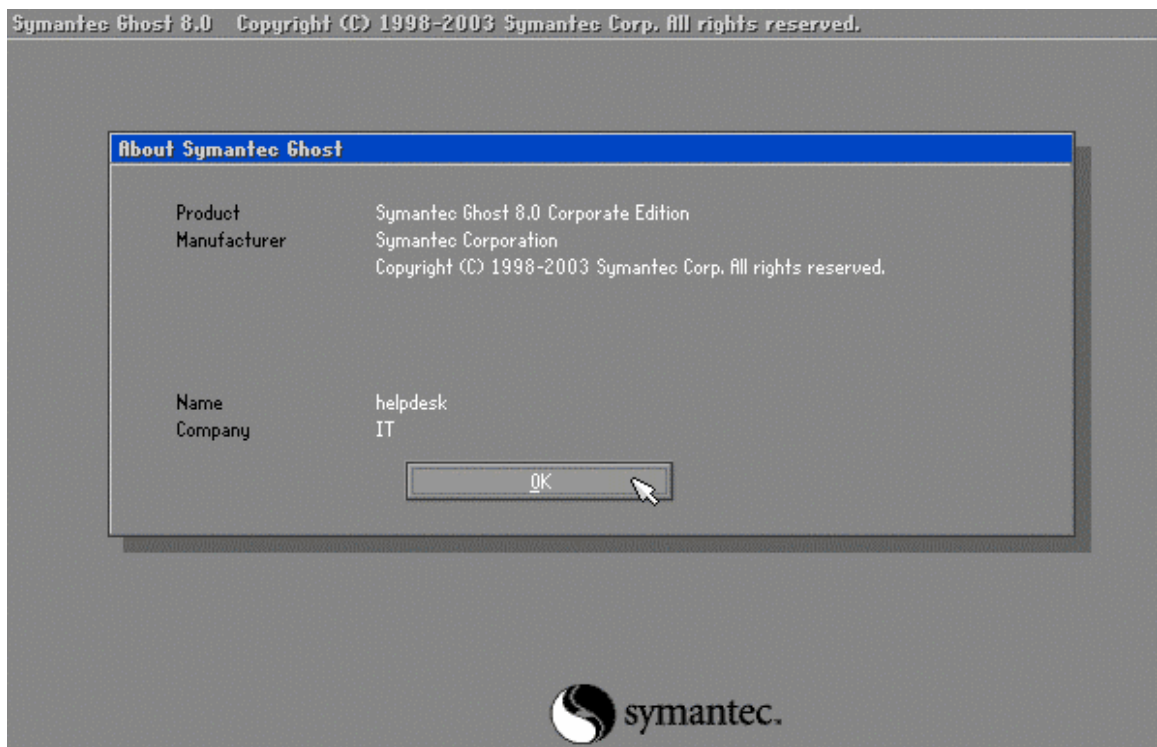


Figure 3.4

Next, you will have a menu with many choices (Figure 3.5), *Click Ghostcast*, then on the following menu, *Click Multicast*.

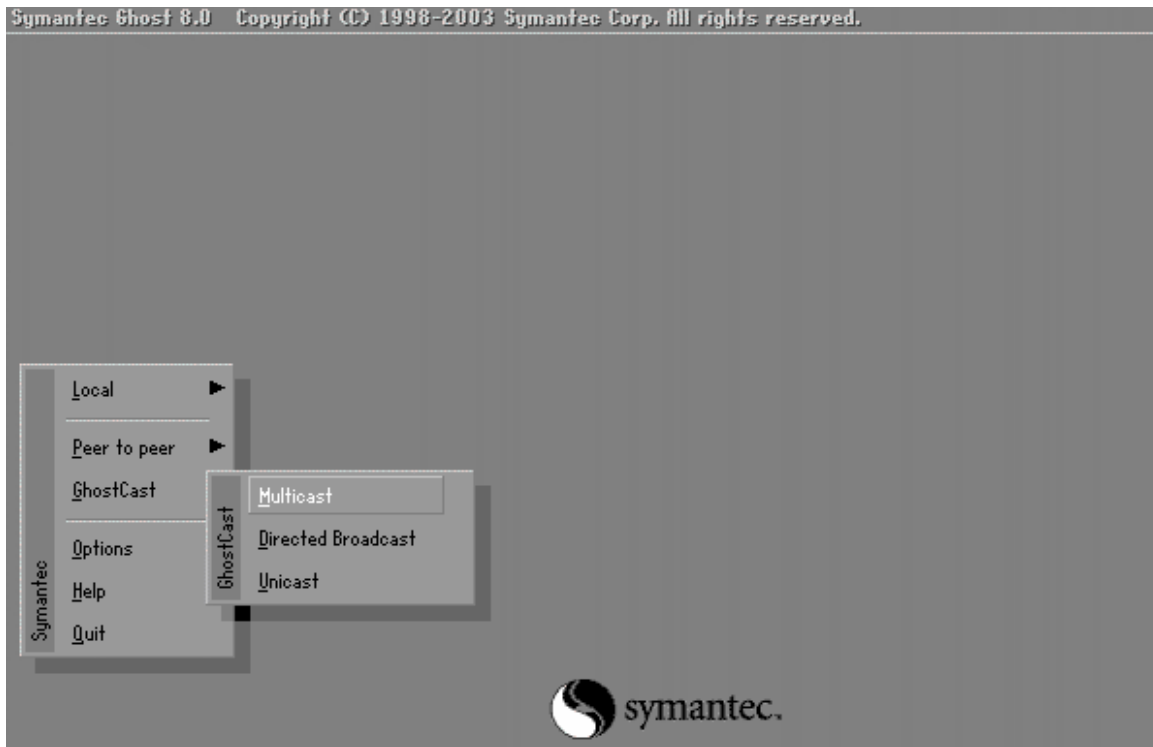


Figure 3.5

The GhostCast session dialogue box opens (Figure 3.6), *Enter Session name*, which you chose in Figure 1.1 or 2.1. Leave the Discovery Method on Automatic, *Click OK*.

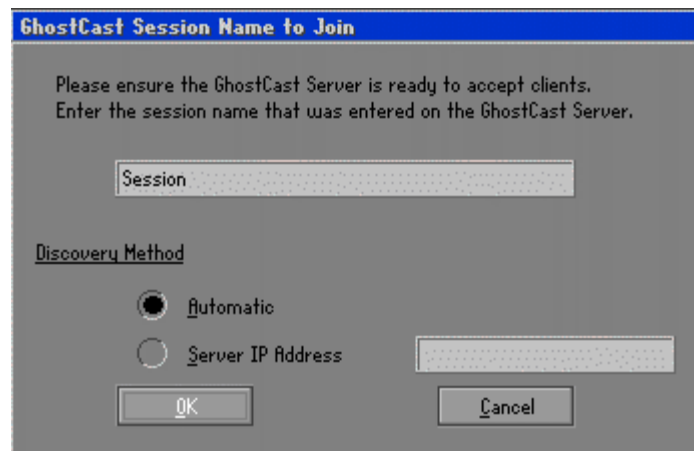


Figure 3.6

On the next menu, you must choose the destination drive, in most cases there is only one drive in the system (Figure 3.7). *Select the Destination Drive* and *Click OK*.

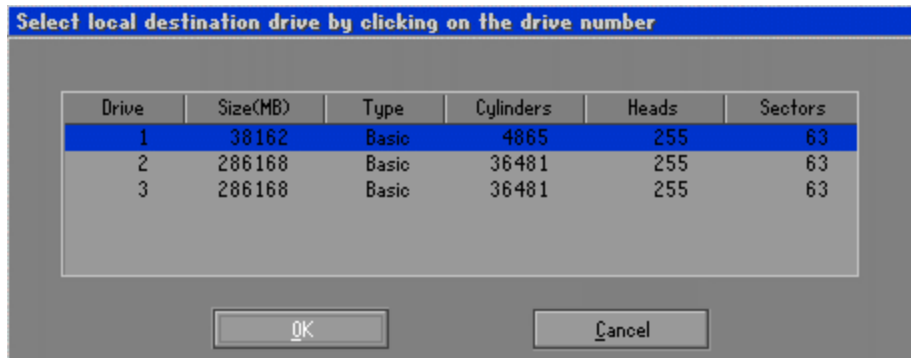


Figure 3.7

The next menu shows you the Destination drive details (Figure 3.8), *Click OK.*

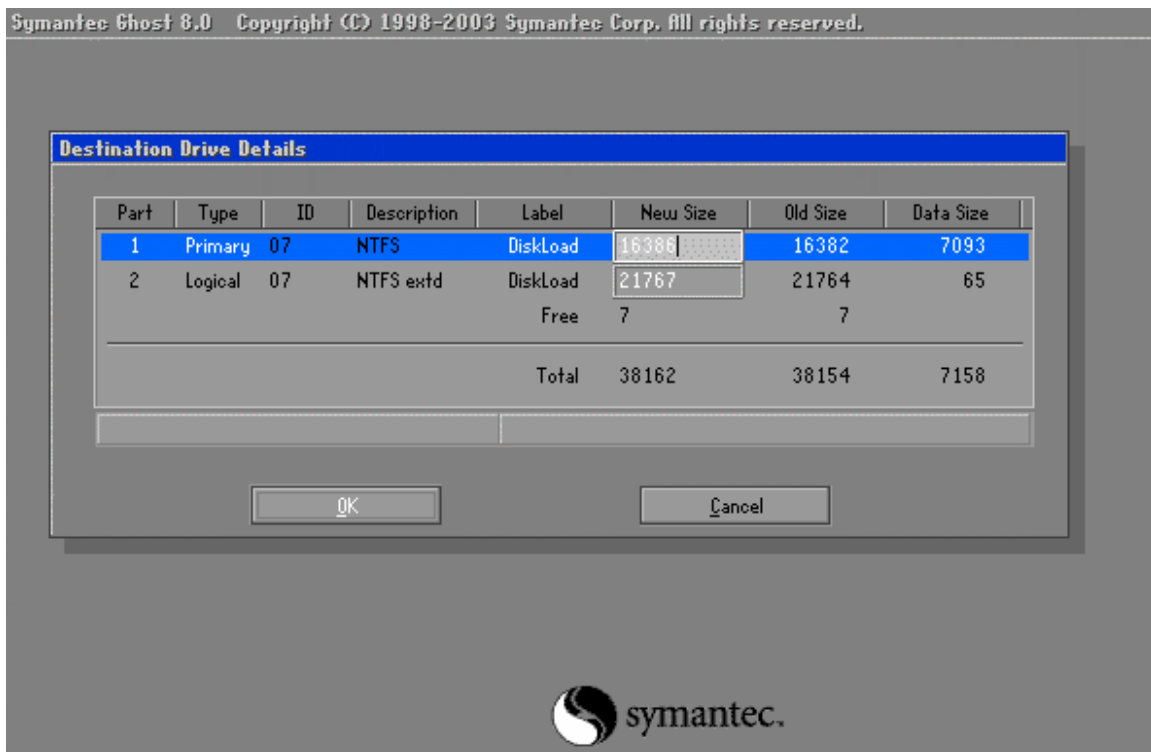
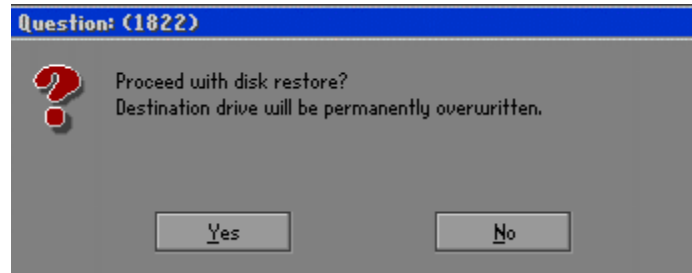


Figure 3.8

The Question dialogue box appears asking if you want to proceed with the restore (Figure 3.9), *Click Yes.*



**Figure 3.9**

The image will now be restored on the system. Upon completion, a dialogue box will appear, *Click **Reset Computer***.

This concludes the document. For more information and advanced use of the Ghost software visit

[http://www.symantec.com/techsupp/enterprise/products/symghost/symghost\\_8/manuals.html](http://www.symantec.com/techsupp/enterprise/products/symghost/symghost_8/manuals.html)